

Palace of Holyroodhouse

# Welcome to the Palace of Holyroodhouse

The Palace is His Majesty The King's official home in Scotland. We hope that you enjoy exploring the Palace!



Holly and Rudy

## Palace Wardens

You can ask people dressed like us questions about the palace, or for help!



Entrance

How many animals can  
you see in the coat of  
arms above the entrance  
to the Palace?

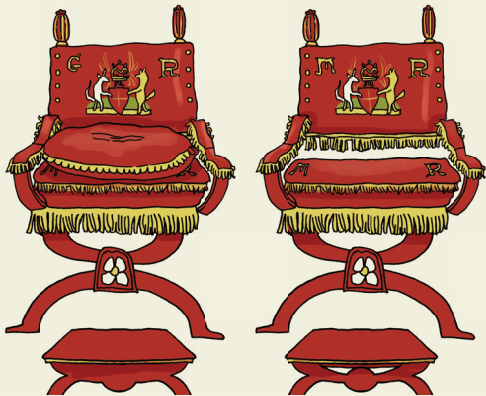


Royal Dining Room

This room was first used as a dining room by Queen Victoria, and it is where The King and the Royal Family eat dinner when they stay at the Palace.

How many people can fit around the table?  
Count the chairs.





Throne Room

These thrones were made for  
King George V and Queen Mary in 1911.

Can you see their initials 'GR' and 'MR' on the  
thrones? They stand for George Rex (Rex  
means 'king' in an old language called Latin)  
and Mary Regina (Regina means 'queen' in  
Latin).



Privy Chamber

The tapestries in this room have been hanging on the walls for more than 200 years! As well as looking nice, they help to keep the room cosy and warm.

Look up at the ceiling – can you see the four crowns? See if you can spot any animals in the room.



King's Bedchamber

The King's Bedchamber was once the most important room in the Palace – it was where only very special people would be invited to speak to royalty in private.

Does your bed have curtains like the King's bed?

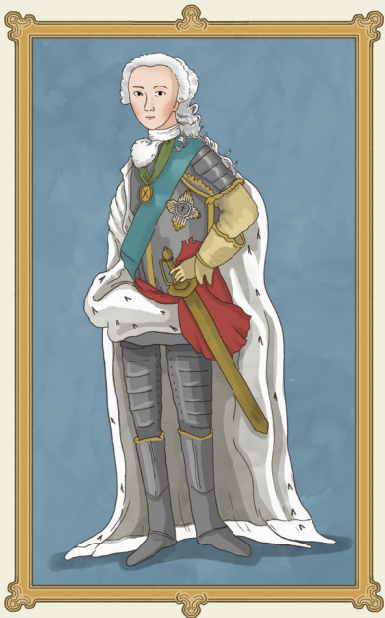


Great Gallery

There are 96 paintings of Scottish monarchs in this room: 95 kings and one queen. They were all painted by the same artist, Jacob de Wet, in just two years.

Can you find the hidden door in the wall?

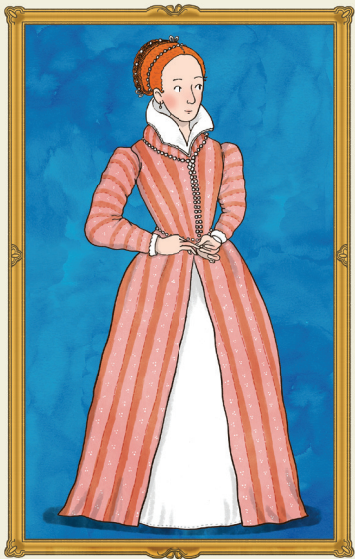




**Bonnie Prince Charlie**

Bonnie Prince Charlie  
brought the Palace to  
life in 1745 when he set  
up court for 6 weeks.

Can you find objects  
that belonged to the  
Prince?



Mary, Queen of  
Scots' Chambers

Mary, Queen of Scots once lived at the Palace. You will now explore her rooms, which contain many objects that belonged to her.

In the Bedchamber, can you find the small Supper Room where Mary used to eat her meals?

In the Outer Chamber, can you find the embroidery of a cat and a mouse, made by Mary, Queen of Scots?



Holyrood Abbey

This building is more than 900 years old.

Can you find a picture of what the abbey  
used to look like?



Palace Gardens

In July, The King has a big party in the gardens  
with 8,000 guests.

Can you hear any birds or animals?





Toilet

Please ask a warden for directions to  
your nearest toilet facility.

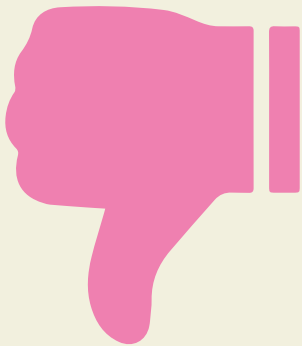
(Toilets can be found in the Mews, Palace  
Quadrangle, Café and the Queen's  
Gallery)



Help



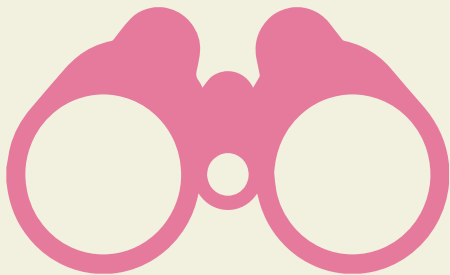
Yes



No



Don't know



Look



Stop





Food